



UAN: 021 111 292 111
Site Office: Plot no. FL3, Block 1 Clifton, Karachi City, Sindh
www.grandmonarch.pk



Experience Imagination

Majestic, opulent and monumental, Grand Monarch redefines the very essence of luxury waterfront living. The apartments offer an incredible view of the majestic Arabian Sea and generously spacious interiors with private infinity pools.

Grand Monarch sets itself apart with avant-garde design and a height that embodies an unprecedented level of grandeur, luxury, and comfort. Resting in the heart of the Clifton area, it grants access to the vibrant pulse of this international city right at your doorstep.

From the moment you step into the exclusive residential lobby, the triumph of the tower's architecture becomes evident on every floor. As you step into your sky residence, the sheer magnificence of these exceptional homes is nothing short of astonishing, offering panoramic views that stretch to the horizon.



34 inches

Architectural Design



Arshad Shahid Abdulla (ASA) is a Karachi based architecture and interior design practice set up in 1979. Over the years, ASA has built up a prestigious portfolio of reputable projects, large and small whose success is informed by their vision: To create a built environment which impacts the individual user in particular and the society in general, aesthetically and practically, thereby contributing to their well-being and progress.

Structural Design



Mushtaq and Bilal (M&B), established in 1975, is a consulting structural engineering firm, providing a comprehensive and complete engineering services, from conceptual design, re-strengthening of structures, bridges, sea ports to construction management, of private and public sector clients. After successfully completed more than 1000 projects M&B is one of the leading consulting engineering firms in Pakistan & has established an impressive track record.

Project Management



AI Engineers traces its roots to 1991 as a local CT bridge engineering firm founded by current CEO Abul Islam, PE, FASCE. Over time, they have expanded in both their geographic footprint and services offered to provide the growing public and private clients with a true multidisciplinary experience. After nearly 30 years of hard work and collaboration, AIE has emerged as a leading national firm with offices in CT, NY, MA, VA, RI, and PA and a diverse project portfolio across the country.

Electrical Design



ElekEn Associates is Pakistan's leading Consulting Engineering Firm offering complete Electrical, Mechanical, Plumbing, ICT & MEP Project Management expertise as well as Specialized Services to virtually all sectors, in Pakistan & UAE. Operating in the industry since 1989, ElekEn Associates have risen to prominence by contributing our services to hundreds of local and international projects of sizable proportions and diverse types.

3D Animation & Visualization Company



With a Decade of Industry Experience and in-depth knowledge, RENDER 360 offers a diverse range of services, including immersive 3D Views & Virtual Walkthrough Animations for real estate and architectural projects. They also specialize in creating detailed 2D/3D Floor Plan Designs, providing captivating Panoramic Views, crafting engaging Brochure & Flyer Designs, and designing eye-catching Billboards & Print Materials. Additionally, RENDER 360 also creates captivating Virtual Reality (VR) experiences. Their digital marketing services cover website design, social media management, and search engine optimization (SEO).

Plumbing & Fire Fighting Desing



SEM Engineers, Consultants in Structural, Electrical and Mechanical Engineering Services, was founded in 1983 and register with Pakistan Engineering Council in 1987 as the consultants, Since the firm has been in practice and providing all the Engineering services in the best co-ordinated form to the leading Architects, Builders and Developers in their projects of varying magnitude in Pakistan and Abroad.



Prime Location



5 MINUTES
Drive to Bar BQ Tonight Clifton



15 MINUTES
Clifton Beach Park Parking



5 MINUTES
Drive to South City Hospital



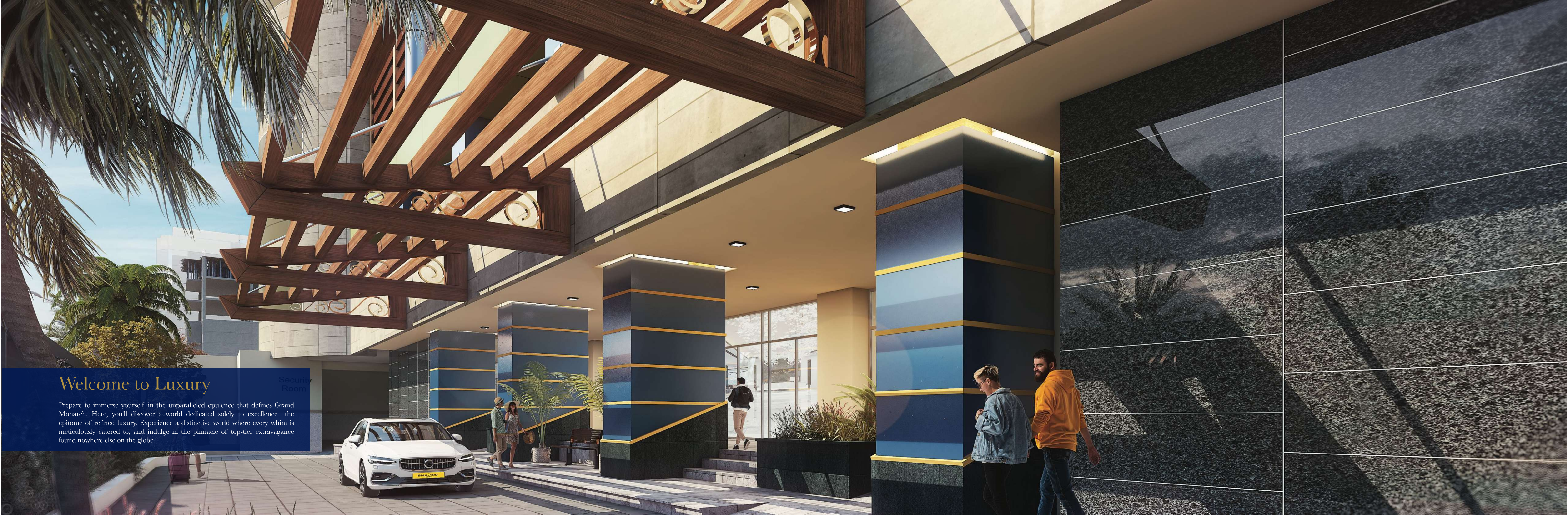
6 MINUTES
Drive to Dolmen Mall

34 inches

Grand Monarch
SEASIDE RESIDENCY

1 inch





Welcome to Luxury

Prepare to immerse yourself in the unparalleled opulence that defines Grand Monarch. Here, you'll discover a world dedicated solely to excellence—the epitome of refined luxury. Experience a distinctive world where every whim is meticulously catered to, and indulge in the pinnacle of top-tier extravagance found nowhere else on the globe.

Security Room



Executive Lounge



Grand Lobby

34 inches

11inch



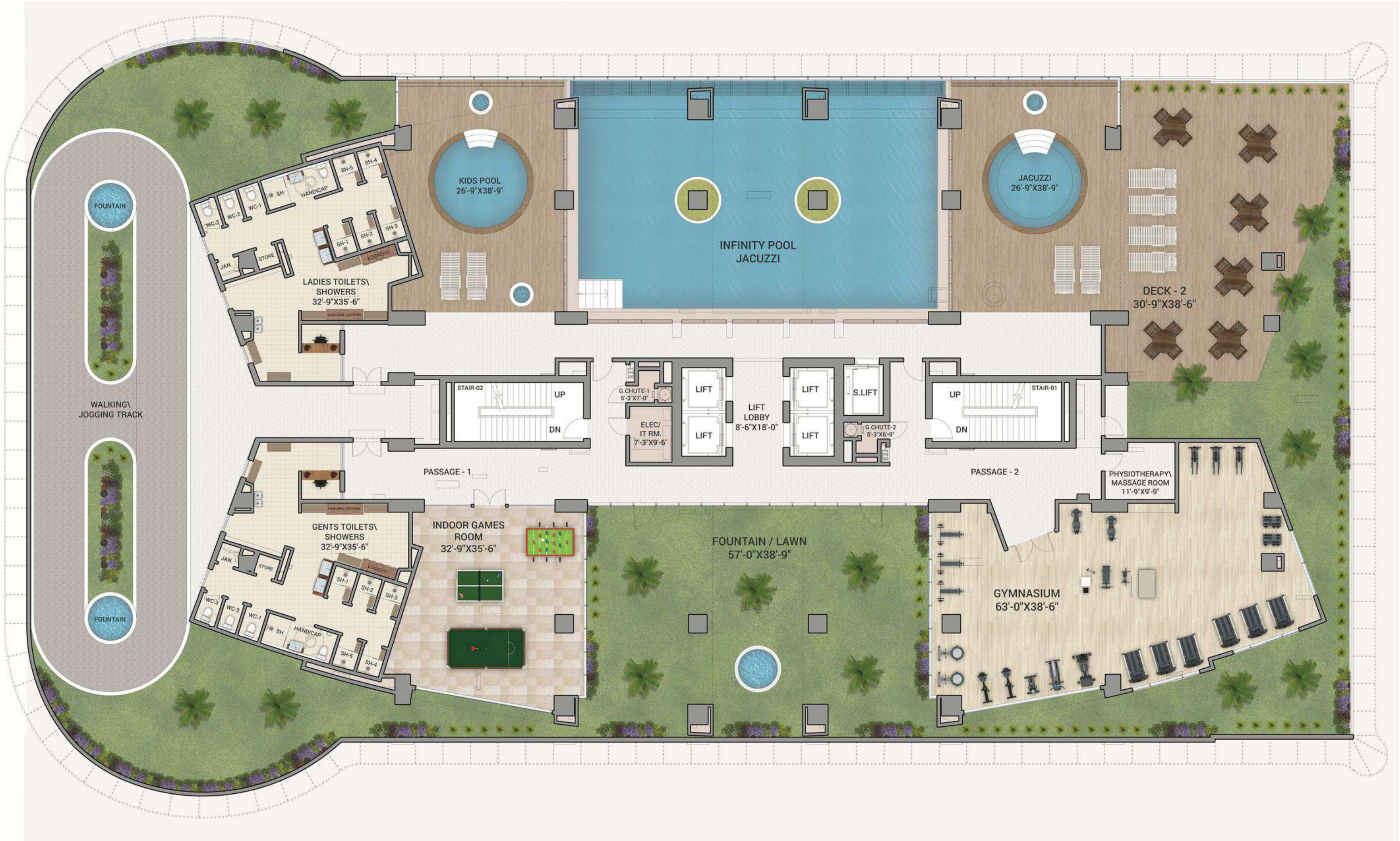
*Splendor
Life*



34 inches



Recreational Floor
7th Floorplan



Floor Area= 15,630 sft



1 inch

34 inches



Our Sunset Viewing Deck offers unparalleled vistas of the Karachi skyline melting into the Arabian Sea. A haven for residents, this seaside sanctuary provides a serene retreat to witness nature's nightly spectacle. With panoramic views and gentle sea breezes, it's the perfect spot to unwind, reflect and savor the beauty of Karachi's twilight hours.

34 inches



Celestial Retreat

Here, every moment is a celestial retreat and luxury takes on a whole new meaning, offering an unobstructed spectacle of the Arabian Sea. From the vantage point of our infinity pool, witness a breathtaking panorama that seamlessly merges the azure waters with the horizon, creating a divine tapestry that's as awe-inspiring as it is luxurious. Experience an escape where the boundary between your vision and the endless expanse of the Arabian Sea blurs, inviting you to savor life's most exquisite pleasures.



Infinity Pool and Jacuzzi

1 inch



Ultimate Recreation

Discover the perfect blend of fitness and leisure with amenities including a spacious walking track, indoor game area, state-of-the-art gym, and serene outdoor yoga deck. Elevate your lifestyle and wellness routine with exclusive access to these world-class facilities, designed to enhance your well-being and enjoyment.

- | | |
|---------------------|-------------------|
| Walking Track | Gymnasium |
| Sunset Viewing Deck | Outdoor Yoga Deck |
| Indoor Games Room | Padel Court |



34 inches



Sanctuary for Vitality

Featuring Pakistan's highest paddle court. A unique and exclusive amenity rarely found in other projects in Pakistan. This state-of-the-art facility provides a premium playing experience with top-quality flooring and lighting. Whether you're looking to engage in friendly matches or hone your skills, the paddle court offers the perfect setting for fitness and fun. Additionally, a jogging track is in place for morning runs or evening strolls. Enjoy the vibrant social atmosphere and enhance your lifestyle with these exceptional recreational amenities right at your doorstep.

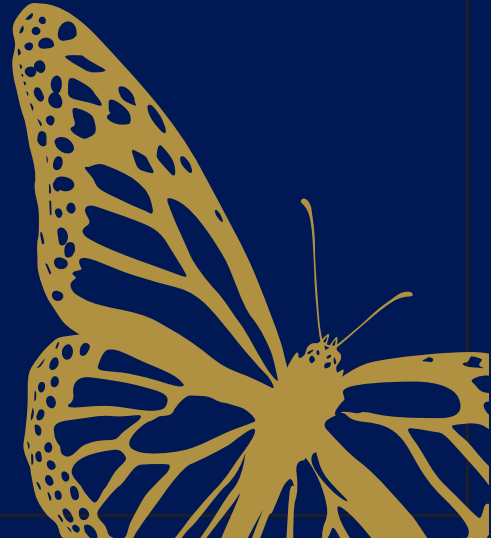


34 inches

11 inch



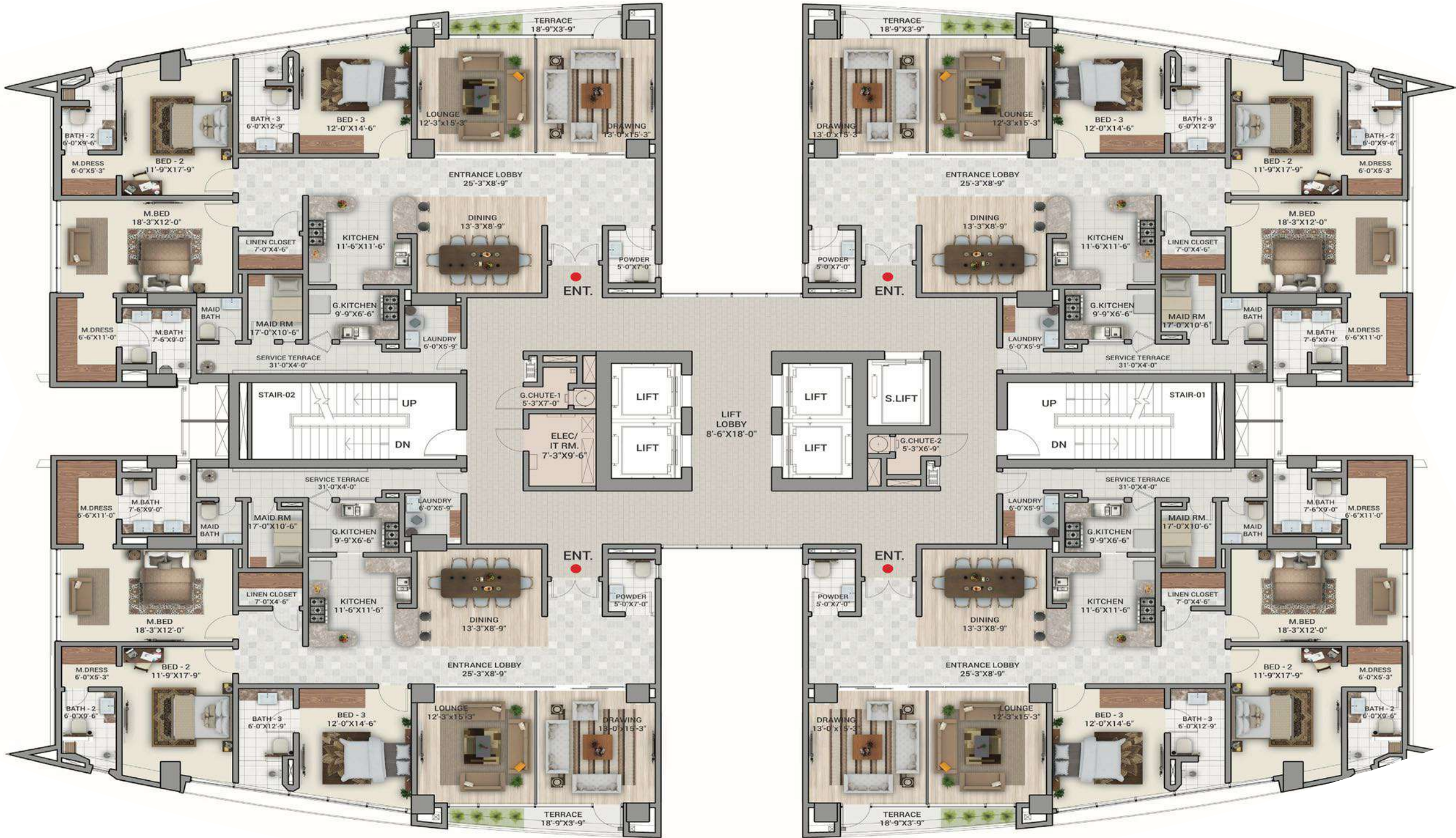
The Residences



34 inches



Net Area= 2,628 sft
Circulation Area = 650 sft
Gross Area = 3,278 sft



Level-17 to 25

3 Bed Typical Floor Plan

1 inch



3 Bedroom Apartment

This lavish abode is a testament to luxury living, offering an unparalleled standard of elegance and comfort that befits the most discerning of tastes. It is a gem, a place where dreams come to life, and where one's every desire is catered to in the lap of opulence. This apartment is a sanctuary of sophistication and grandeur that exudes luxury and comfort.



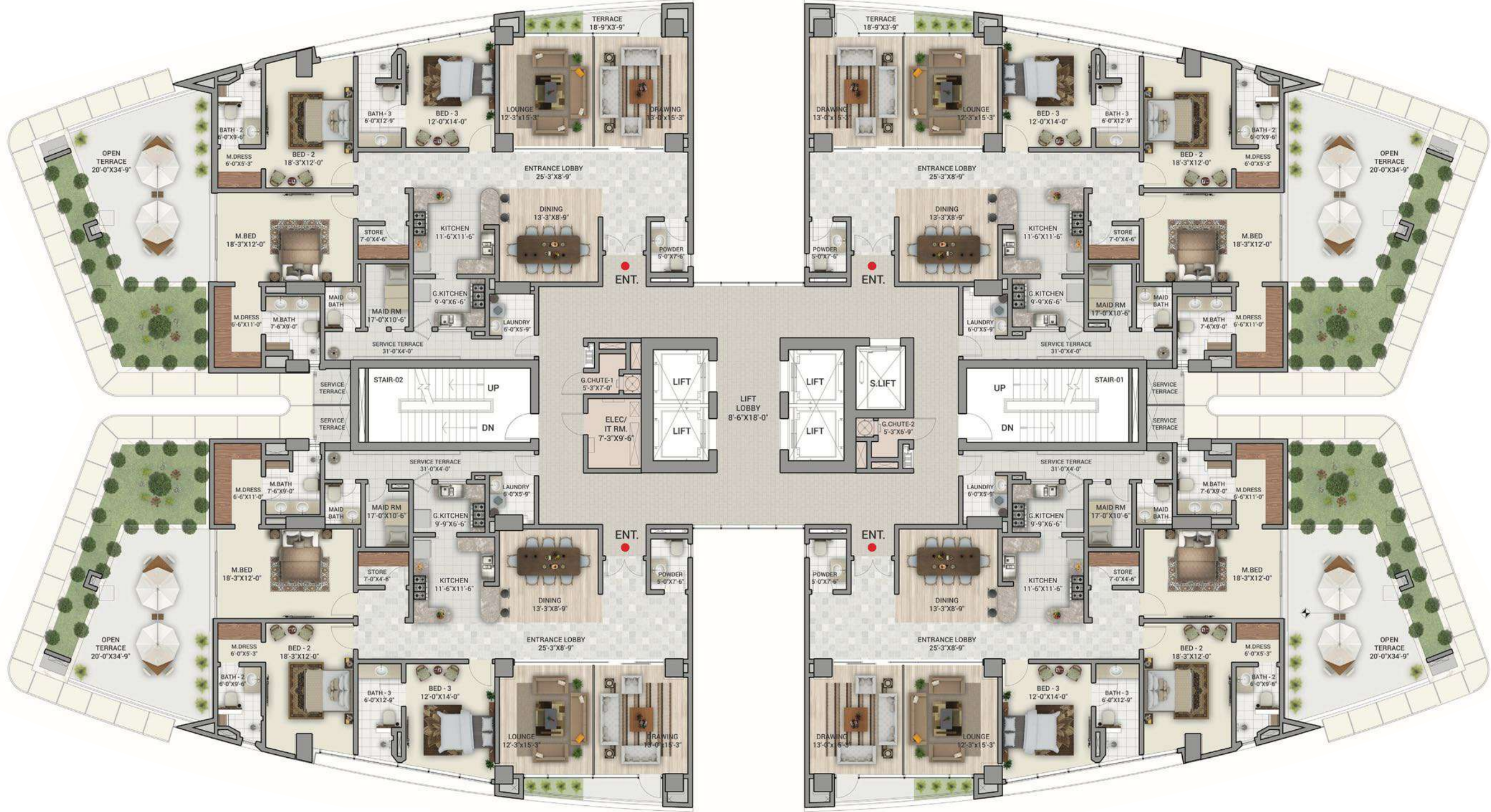
Bedroom

34 inches

Grand Monarch
SEASIDE RESIDENCY



Net Area= 2,628 sft
Circulation Area = 650 sft
Gross Area = 3,278 sft
Terrace Area = 600 sft



Level- 16

3 Bed with Terrace

34 inches



3 Bedroom Apartment with Terrace

Experience urban luxury in our 3-bedroom apartment boasting a stunning terrace offering panoramic vistas of Karachi city and the majestic Arabian Sea. Indulge in breathtaking sunsets, city lights, and the soothing sea breeze from the comfort of your own private retreat. Embrace a lifestyle of elegance and tranquillity.

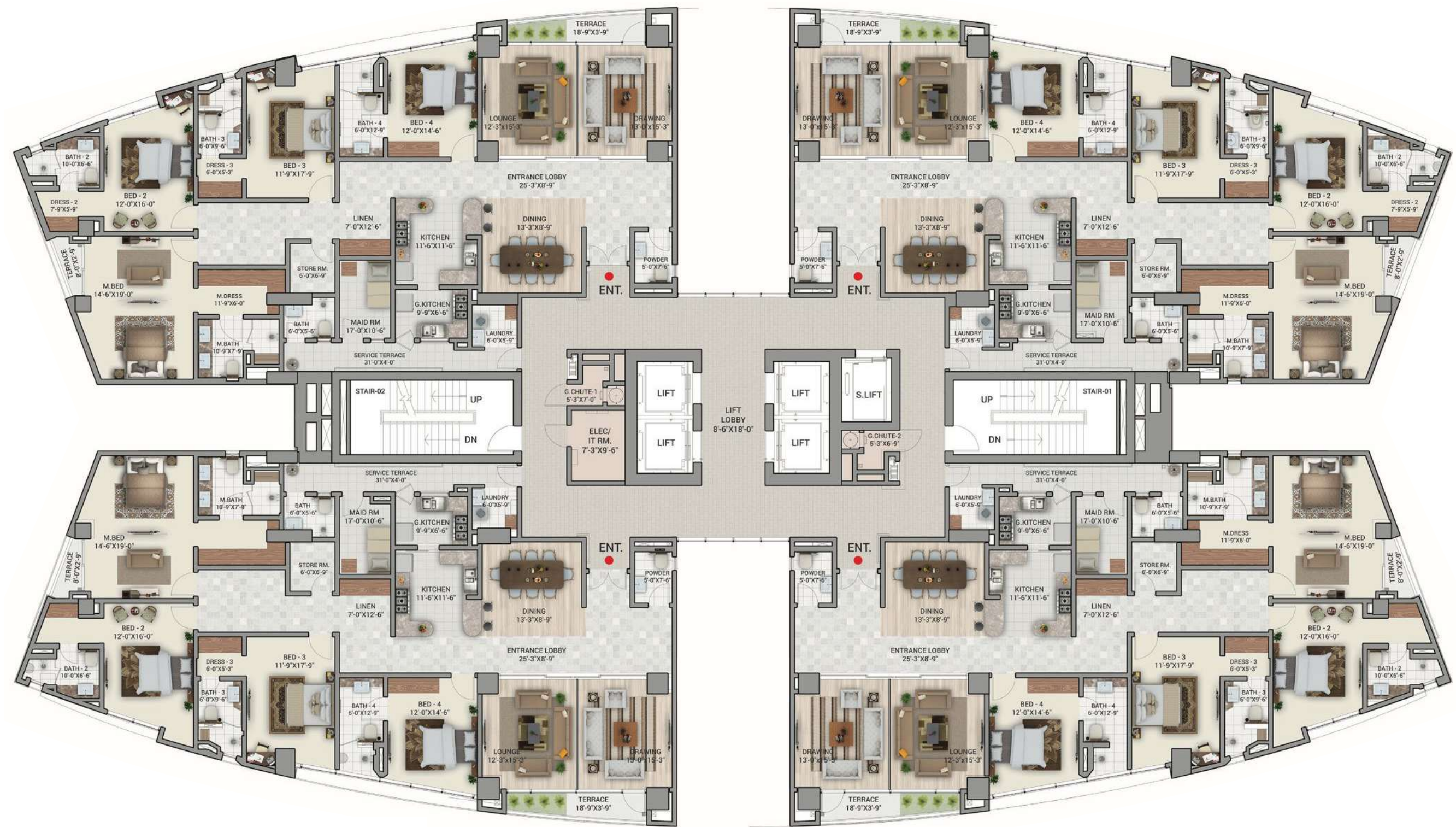


Bedroom

34 inches



Net Area= 3,278 sft
Circulation Area = 650 sft
Gross Area = 3,907 sft



Level- 8 to 15

4 Bed Apartment



4 Bedroom Apartment

The epitome of luxury finds its home in our breathtaking 4 bedroom apartment. Nestled within the heart of elegance, this exquisite residence embodies the essence of lavish living, setting the tone for the unparalleled grandeur that awaits within. Available in both oceanfront and city view, this 4 bedroom is an unparalleled standard of luxury living, a symphony of elegance and comfort that beckons those with an appreciation for the finer things in life.



Bedroom

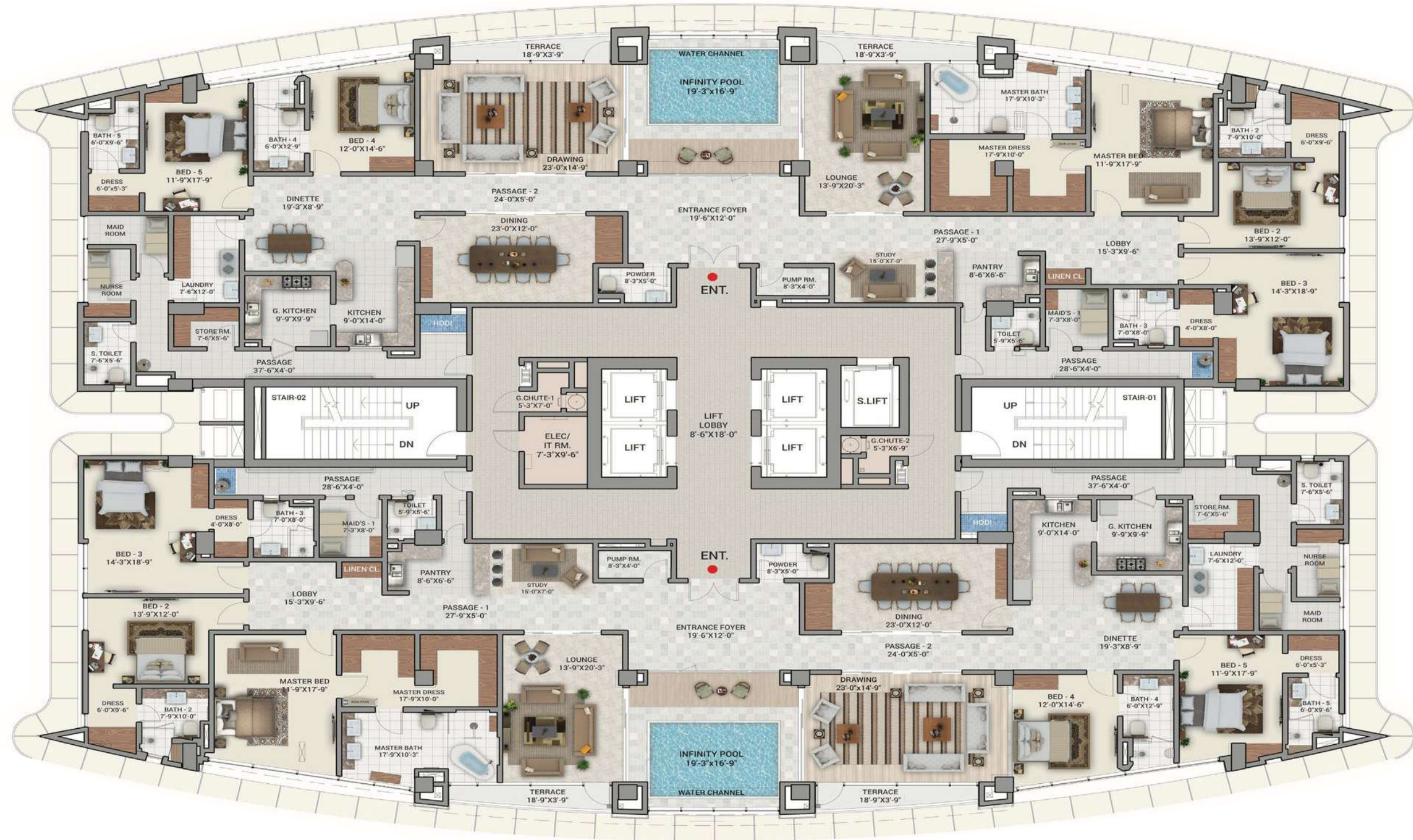
34 inches

*The Crown
Jewel*



11 inch

34 inches



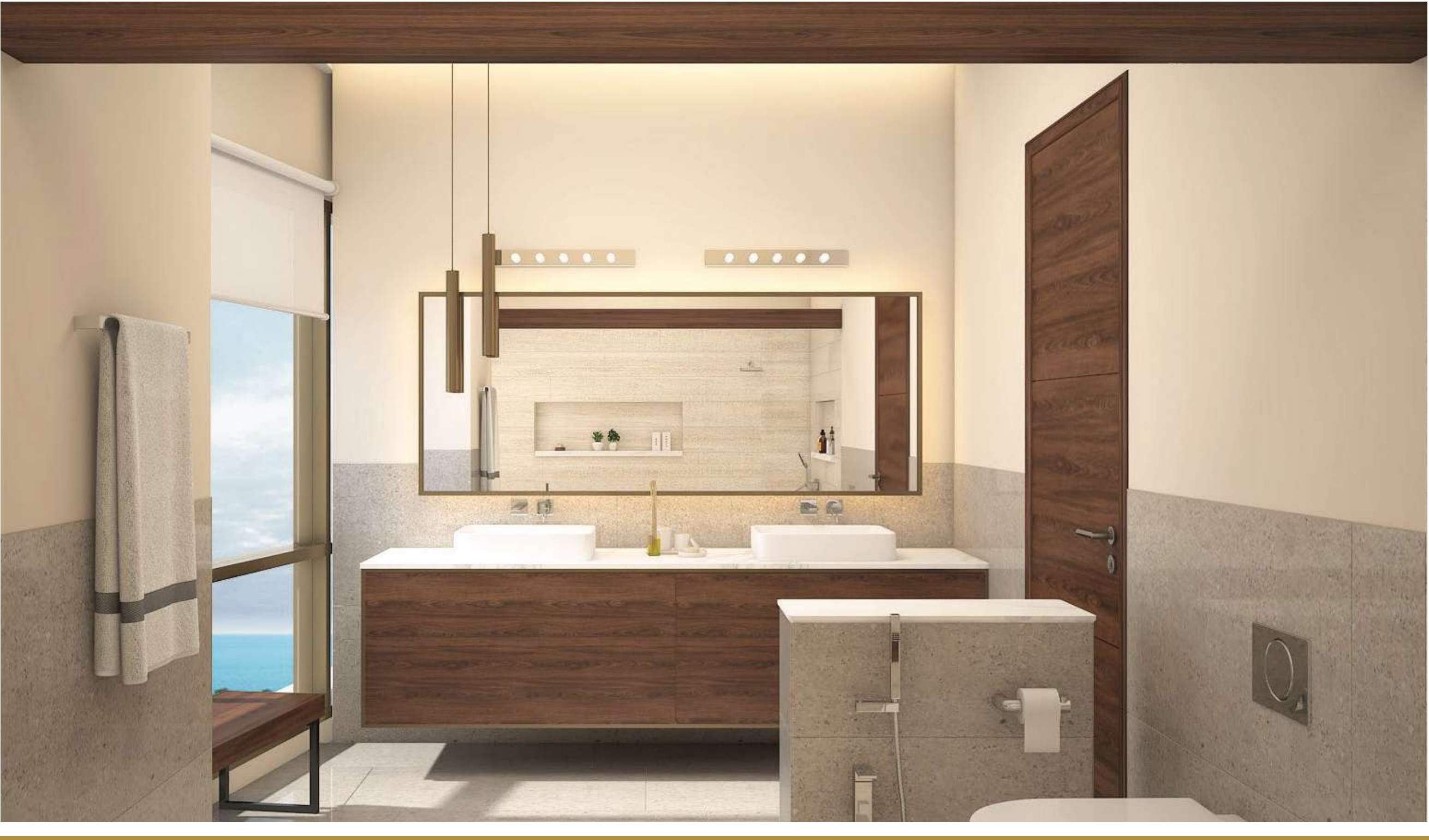
Net Area = 5,940 sft
Circulation Area = 1,296 sft
Gross Area = 7,236 sft

Level- 26 to 33

5 Bed Apartment

1 inch

34 inches



5 Bedroom Apartment

Each unit is a masterpiece of detail and design, comes with its own separate infinity pool with oceanfront view and 4 reserved car parking spots. Find your sanctuary of tranquility, boast lavish en-suite rooms adorned with the finest materials. These apartments offer unparalleled comfort and tranquility, where every detail speaks of luxury and indulgence.



Bedroom

34 inches



Elevated Tranquility

Dive into a world of unparalleled luxury in our infinity pool, where the mesmerizing cityscape meets the endless horizon of the sea. The private infinity pool with 5 bed apartments is a haven of tranquility and style, offering residents the chance to unwind amidst panoramic views that stretch from the bustling city lights to the calming waters beyond. Immerse yourself in the infinity pool, where the boundaries between the urban landscape and the sea blur, creating a seamless fusion of sophistication and serenity.



Drawing Room



Socializing and Leisure

Grand Monarch sets the stage for unparalleled hospitality, entertainment and rooftop fun. Everything is designed to cater to your comfort, privacy and luxurious living. The state-of-the-art entertainment lounge is a haven for leisure, equipped with cutting-edge audio-visual systems for unforgettable gatherings. Whether hosting friends or enjoying leisure moments, Grand Monarch ensures your space is as inviting as it is entertaining. Welcome to a lifestyle where every gathering becomes an extraordinary celebration.

- | | |
|--------------------------------|--------------------|
| • Panoramic View | • Executive Lounge |
| • Rooftop BBQ Area | • Function Room |
| • Rooftop Children's Play Area | • Rooftop Gazebo |



34 inches



Roof Floor Plan



1 inch

34 inches



Unforgettable Evenings

Immerse yourself in Karachi's luminous cityscape to the east and the tranquil Arabian Sea to the west at the rooftop area. It's an invitation to create memories that will linger for a lifetime. With ample seating, relish spectacular views during dinner or afternoon tea, turning every moment into an extraordinary experience.



Recreational Sitting Area



Enchanted Escapes

Our gazebo offers a tranquil retreat for relaxation and gatherings. It's an ideal spot for peaceful moments or socializing with loved ones. Meanwhile, our children's play area sparks joy and imagination, featuring safe and stimulating activities that foster laughter and exploration. At our haven, both young and old find spaces designed for blissful moments and cherished memories.



Rooftop Gazebo

34 inches



Majestic View

Indulge in a mesmerizing panorama of the Arabian Sea and Clifton Area. The rooftop panoramic vista showcases the dynamic charm of Karachi with its modern skyline against the tranquil azure water. Whether day or night, our privileged location allows you to witness the ever-changing canvas of the city offering both city and sea views. As the sun sets, be captivated by the vibrant hues that paint the sky from the comfort of your home.



City View

Building Facilities

- EV Charging Facility
- Fiber Backbone for High-Speed Internet
- Backup Power Generators
- Visitor Drop-off Area
- 4 Reserved Car Parking for Five Bedroom Apartments
- 3 Reserved Car Parking for Three and Four Bedroom Apartments
- Additional Guest Parking
- Car Washing Facility at the Dedicated Car Bays
- Dedicated Drivers Sitting Area
- CCTV Cameras
- Intercom System
- Fire Alarm
- Dedicated Fireman Elevator
- Fire Sprinkler System in Every Apartment
- Synchronized Elevator
- False Ceiling in Entire Apartment
- Smart Switches
- Garbage Chutes
- Dedicated Service Entrance and Exit Area
- Rooftop Solar Panels
- External Facade Cleaning Units





Parking Convenience

Indulge in luxury with our exclusive apartment car parking, spanning six floors of opulence. Each of our five-bedroom residences boasts four reserved parking spots, while our four and three-bedroom units offer three dedicated parking spots. Experience convenience with EV charging facilities, ensuring your vehicle is always ready to go. Elevate your lifestyle with unparalleled parking amenities in our prestigious community.

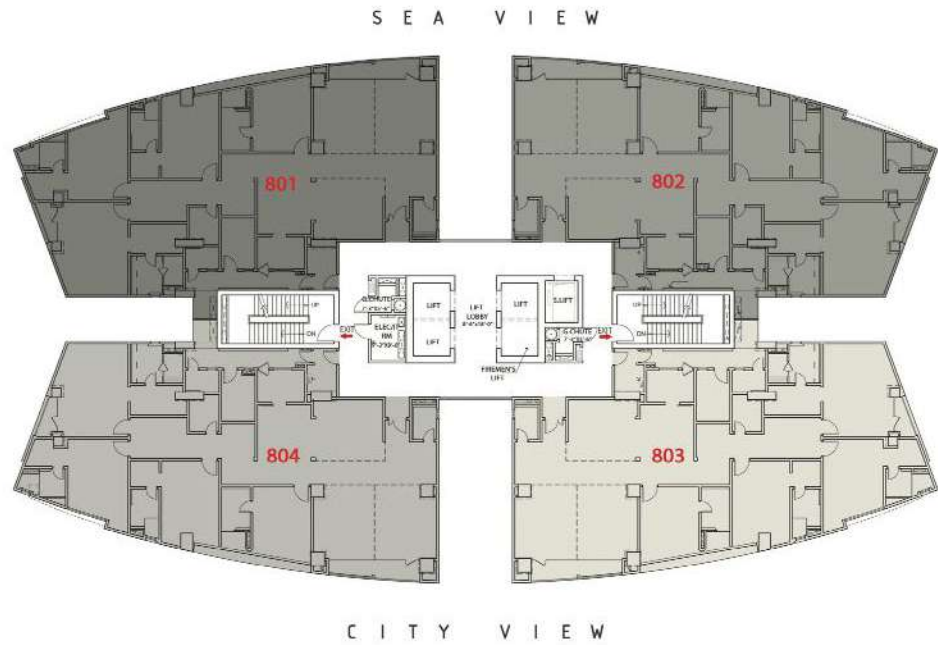


EV Charging

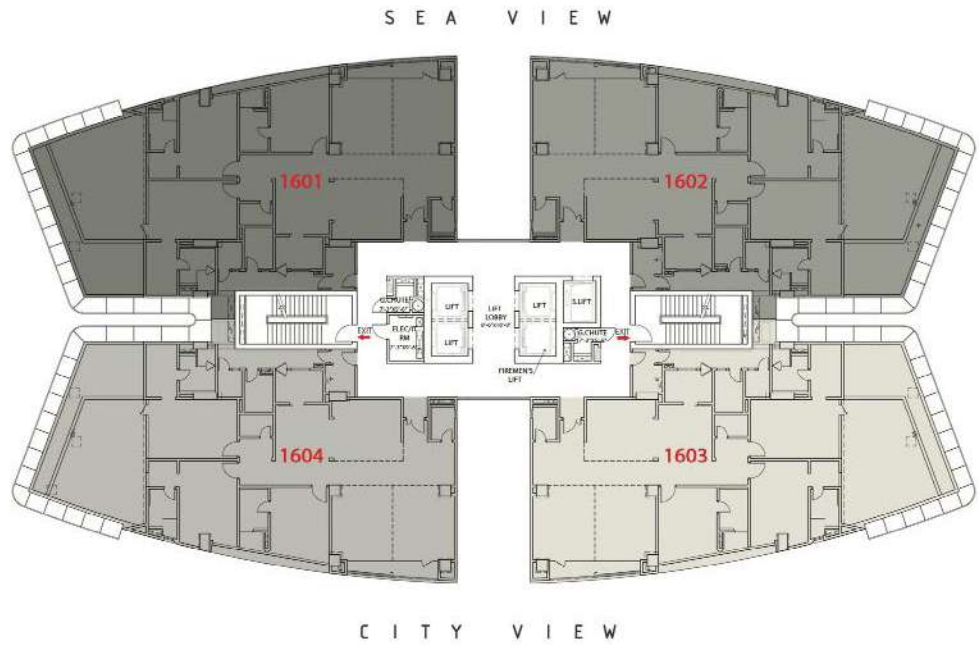


Guest Parking

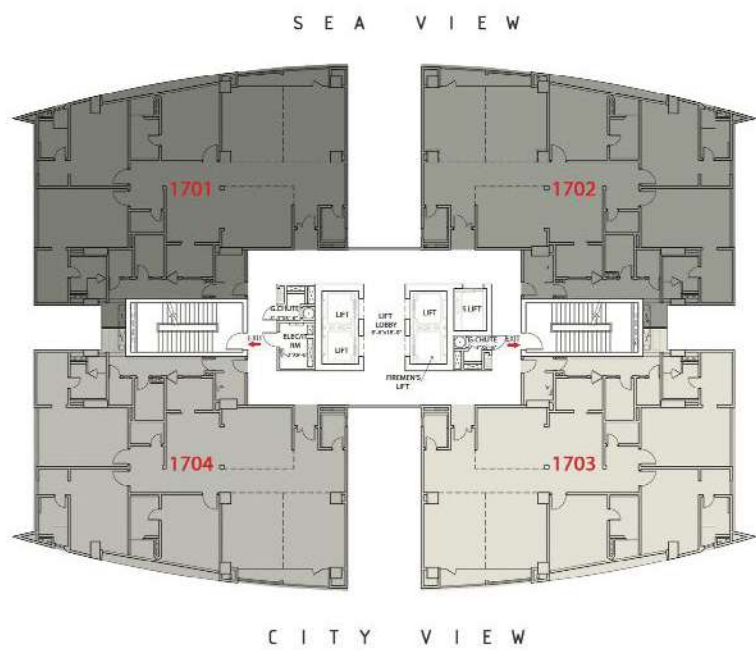
Apartment Numbering



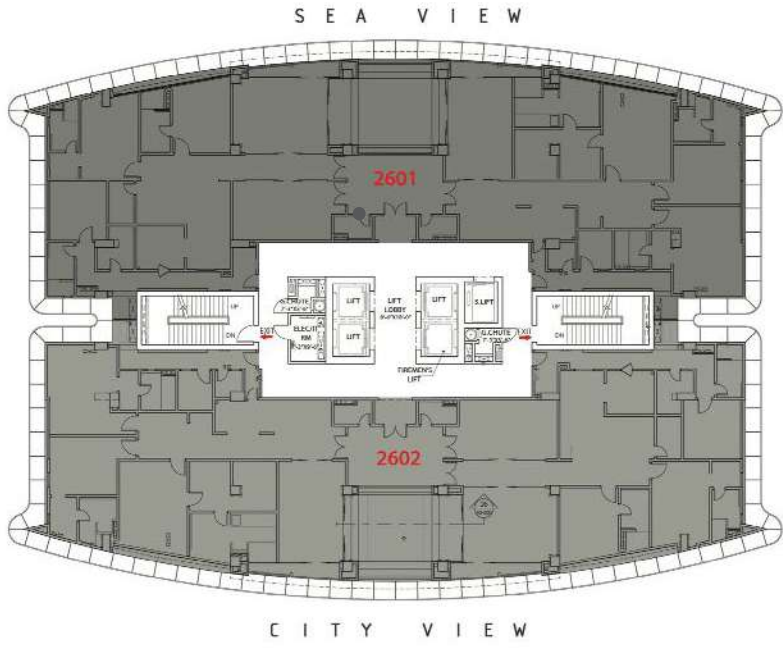
4-BED APARTMENT
LEVEL - 08



3-BED APARTMENT WITH PRIVATE TERRACE
LEVEL - 16



3-BED APARTMENT
LEVEL - 17



5-BED APARTMENT
LEVEL - 26

| | | | | | |
|-------------|--------------------------------------------|------|------|------|------|
| LEVEL - 34 | ROOF | RL | | | |
| LEVEL - 33 | 5-BED APARTMENT | 3301 | | 3302 | |
| LEVEL - 32 | 5-BED APARTMENT | 3201 | | 3202 | |
| LEVEL - 31 | 5-BED APARTMENT | 3101 | | 3102 | |
| LEVEL - 30 | 5-BED APARTMENT | 3001 | | 3002 | |
| LEVEL - 29 | 5-BED APARTMENT | 2901 | | 2902 | |
| LEVEL - 28 | 5-BED APARTMENT | 2801 | | 2802 | |
| LEVEL - 27 | 5-BED APARTMENT | 2701 | | 2702 | |
| LEVEL - 26 | 5-BED APARTMENT | 2601 | | 2602 | |
| LEVEL - 25 | 3-BED APARTMENT | 2501 | 2502 | 2503 | 2504 |
| LEVEL - 24 | 3-BED APARTMENT | 2401 | 2402 | 2403 | 2404 |
| LEVEL - 23 | 3-BED APARTMENT | 2301 | 2302 | 2303 | 2304 |
| LEVEL - 22 | 3-BED APARTMENT | 2201 | 2202 | 2203 | 2204 |
| LEVEL - 21 | 3-BED APARTMENT | 2101 | 2102 | 2103 | 2104 |
| LEVEL - 20 | 3-BED APARTMENT | 2001 | 2002 | 2003 | 2004 |
| LEVEL - 19 | 3-BED APARTMENT | 1901 | 1902 | 1903 | 1904 |
| LEVEL - 18 | 3-BED APARTMENT | 1801 | 1802 | 1803 | 1804 |
| LEVEL - 17 | 3-BED APARTMENT | 1701 | 1702 | 1703 | 1704 |
| LEVEL - 16 | 3-BED APARTMENT WITH PRIVATE TERRACE | 1601 | 1602 | 1603 | 1604 |
| LEVEL - 15 | 4-BED APARTMENT | 1501 | 1502 | 1503 | 1504 |
| LEVEL - 14 | 4-BED APARTMENT | 1401 | 1402 | 1403 | 1404 |
| LEVEL - 13 | 4-BED APARTMENT | 1301 | 1302 | 1303 | 1304 |
| LEVEL - 12 | 4-BED APARTMENT | 1201 | 1202 | 1203 | 1204 |
| LEVEL - 11 | 4-BED APARTMENT | 1101 | 1102 | 1103 | 1104 |
| LEVEL - 10 | 4-BED APARTMENT | 1001 | 1002 | 1003 | 1004 |
| LEVEL - 09 | 4-BED APARTMENT | 901 | 902 | 903 | 904 |
| LEVEL - 08 | 4-BED APARTMENT | 801 | 802 | 803 | 804 |
| LEVEL - 07 | RECREATION | R | | | |
| LEVEL - 06 | PARKING | PL6 | | | |
| LEVEL - 05 | PARKING | PL5 | | | |
| LEVEL - 04 | PARKING | PL4 | | | |
| LEVEL - 03 | PARKING | PL3 | | | |
| LEVEL - 02 | PARKING | PL2 | | | |
| LEVEL - 01 | PARKING | PL1 | | | |
| LEVEL - 00 | GROUND FLOOR | GF | | | |
| LEVEL - -01 | BASEMENT | B | | | |